

# Thermal Screening Kit

COSEC ASTTL8FS



## Introduction

This guide describes how to install Temperature Sensor with compatible Devices for an easy and brisk way to cater temperature logging requirements.

With '*Thermal Screening Kit*', the human body temperature will be measured which will be then displayed by connected Matrix Door Solution. Based on the detected temperature and configuration in COSEC, the user will be allowed or denied for access of the doors.

---

Please read this guide first for correct installation and retain it for future reference. The information in this guide has been authenticated at the time of publication.

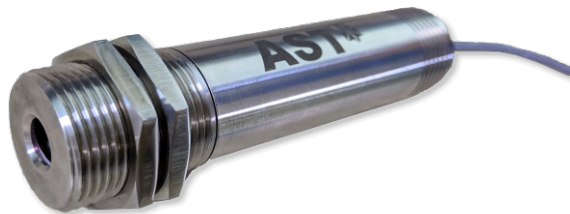
However, Matrix Comsec reserves the right to make changes in product design and specifications without prior notice.

## Pre-Installation Safety Instructions

1. Do not install the sensor in extremely hot temperature or under direct sunlight on turnstile or at extra bright places. For best result, install the sensor in ambient temperature less than 35 °C.
2. Do not install the device in outdoor areas which may be exposed to rain, cold and dust. You can do indoor installation or on the turnstile under the roof.
3. You can mount the device on a flat surface such as a wall or Elevator, close to the access point (door).
4. Do not install near volatile inflammable materials.

## What's Your Package Contains

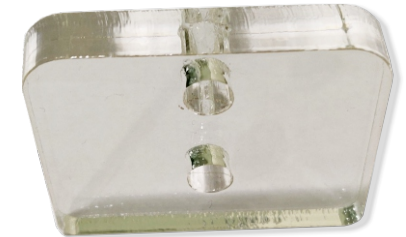
- ASTTL8FS - Sensor Head



- Adjustable Mounting for Sensor Head

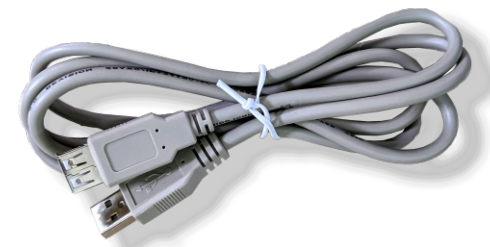


1) Clamp and Clamp Head



2) ASTTL8FS Clamp SPCR

- USB 2.0 Male to USB 2.0 Female cable (Around 1.5 meter)



- BRKT Wall Mount - CutOut & ENCL Back Cover - CutOut (for COSEC VEGA)

## Compatible Devices

Below list of device (Direct Door) are compatible with the Thermal Screening Kit through which the temperature will be recorded.

- COSEC Door PVR (V01R51 & onwards)
- COSEC Door V3 (V01R50 & onwards)
- COSEC Door V4 (V01R10 & onwards)
- COSEC Door FMX (V01R23 & onwards)
- COSEC VEGA (V01R42 & onwards)
- COSEC ARGO (V01R15 & onwards)

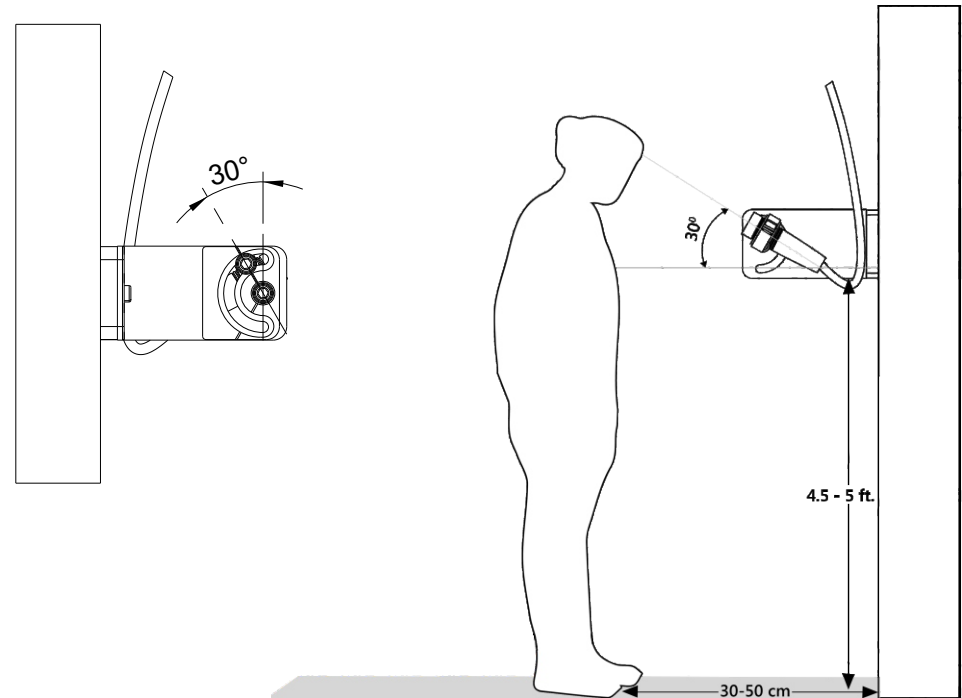
### Note:

- The connection of USB Interface with ARGO is possible only via OTG connector (USB to Micro USB).

## Installation Guidelines

Sensor Mounting location plays vital role on its use and operation. Be sure to identify a location that meets following guidelines,

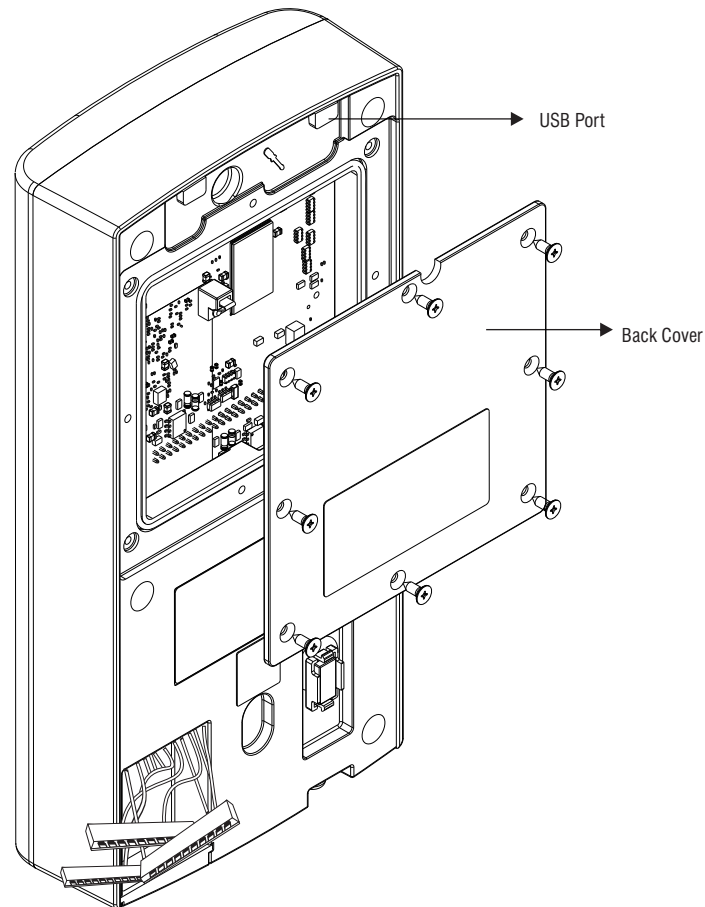
- 1) Find out the suitable place nearer to the installed COSEC Door where the Adjustable Stand of sensor head can be mounted on the height of 4.5 to 5ft above the ground by using drill and screws.
- 2) By keeping an angle =  $30^\circ$  with the wall, fix the sensor head into stand.



3) For all devices other than COSEC VEGA, insert the USB interface directly into the USB port of respective device.

For COSEC VEGA, follow further instructions.

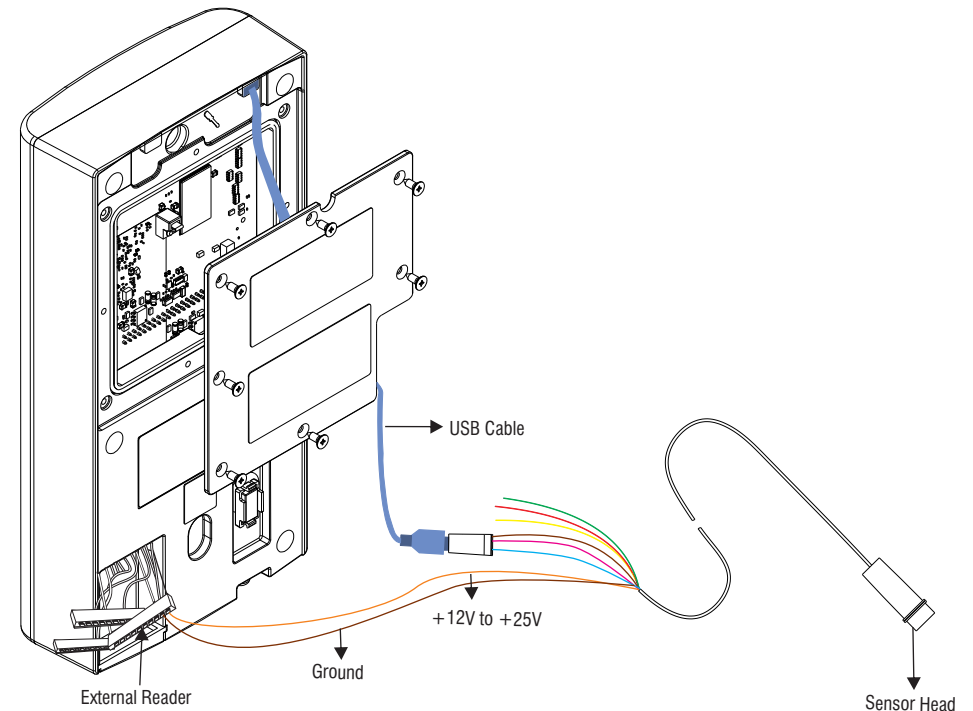
- Demount COSEC VEGA, remove its back cover and mounting plate as illustrated in below figure.



**COSEC VEGA**

4) Now, insert the USB interface into the USB port of COSEC VEGA through the USB Male - USB Female cable as illustrated in below diagram.

**Note:** User needs to provide DC power supply (+12V to +25V) externally or through external reader of the Sensor .



7) Once the USB Connections are completed, mount COSEC VEGA by using Back Cover and Mounting Plate received with Screening kit.

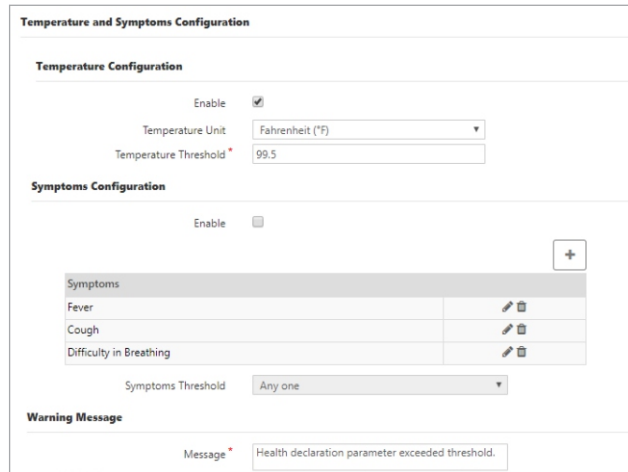
**Note:**

- For detailed Installation of COSEC VEGA, refer Quick Installation Guide of COSEC VEGA on [www.matrixaccesscontrol.com](http://www.matrixaccesscontrol.com)

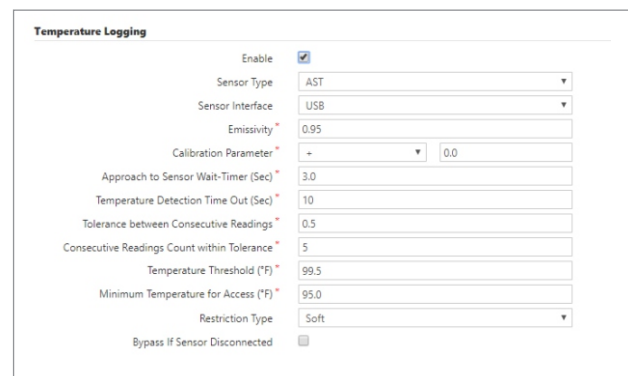
# Verify Configuration at COSEC Server

Login to the COSEC Server(V16R04 & onwards) with system administrator and configure the Temperature Parameters

- **Admin > Global Policy > User > Temperature and Symptoms configuration**



- **Device > Device Configuration > Advanced > Temperature Logging**



**Note:** Refer COSEC Server User Guide for the detailed configuration.

# Technical Specifications

<b>Measured Temperature Range</b>	0° C to 50° C
<b>Photodetector Type</b>	Thermopile
<b>Distance to Spot Size ratio</b>	15:1
<b>Response Time</b>	100ms adjustable upto 1sec
<b>Accuracy</b>	0.3°C
<b>Analog Output</b>	4-20mA or 0-20mA or 0-10V or T/C K-type or J-type user selectable
<b>Digital Output</b>	USB 2.0, RS-232/RS-485 interface card <i>(optional)</i> *at a time only one digital output possible
<b>Operating Temperature Range</b>	0° C ..... 50° C
<b>Power Supply</b>	5V USB Adaptor, 12-24V DC Supply * User can select anyone option
<b>Power Consumption</b>	Max 1.2 watt
<b>Operating Humidity</b>	10-95%
<b>Weight &amp; Dimension</b>	200g, Dia = Ø25mm; L=103mm

## **Disposal of Product after End-Of-Life**

### **WEEE Directive 2002/96/EC**

The product referred is covered by the waste Electrical and Electronic Equipment (WEEE) directive and must be disposed of in a responsible manner.

At the end of product life cycle; batteries, soldered boards, metal components and plastic components must be disposed through recyclers.

If you are unable to dispose-off the products or unable to locate e-waste recyclers, you may return the products to Matrix Return Material Authorization (RMA) department.

---



**SECURITY SOLUTIONS**

**MATRIX COMSEC**

**Head Office**

394-GIDC, Makarpura, Vadodara - 390010, India

Ph: (+91)1800-258-7747

Email: [Support@MatrixComSec.com](mailto:Support@MatrixComSec.com)

[www.matrixvideosurveillance.com](http://www.matrixvideosurveillance.com)