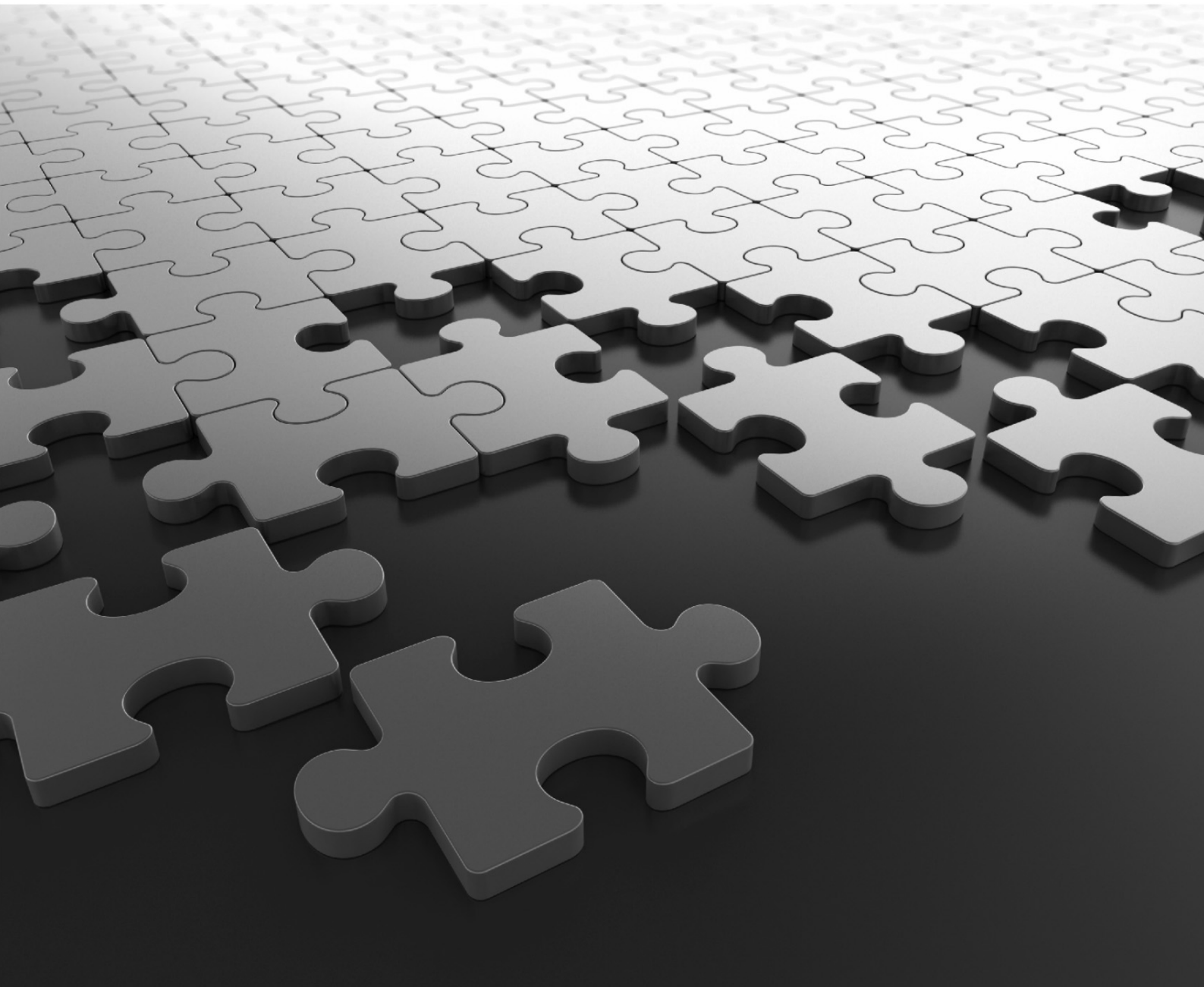


# **PRAMAN CMS Installation Guide**



# Documentation Disclaimer

Matrix Comsec reserves the right to make changes in the design or components of the product as engineering and manufacturing may warrant. Specifications are subject to change without notice.

The product may not support all the features and facilities described in the documentation.

Information in this documentation may change from time to time. Matrix Comsec reserves the right to revise information in this publication for any reason without prior notice. Matrix Comsec makes no warranties with respect to this documentation and disclaims any implied warranties. While every precaution has been taken in the preparation of this document, Matrix Comsec assumes no responsibility for errors or omissions. Neither is any liability assumed for damages resulting from the use of the information contained herein.

Neither Matrix Comsec nor its affiliates shall be liable to the purchaser of this product or third parties for damages, losses, costs or expenses incurred by the purchaser or third parties as a result of: accident, misuse or abuse of this product or unauthorized modifications, repairs or alterations to this product or failure to strictly comply with Matrix Comsec's operating and maintenance instructions.

## Copyright

All rights reserved. No part of this document may be copied or reproduced in any form or by any means without the prior written consent of Matrix Comsec.

*Version 1*

*Release date: March 25, 2019*

# *Contents*

---

<b>Introduction .....</b>	<b>1</b>
<i>Welcome .....</i>	<i>1</i>
<b>Installing and Configuring PRAMAN CMS .....</b>	<b>3</b>

---

## **Welcome**

Thank you for choosing MATRIX PRAMAN CMS! We hope you will make optimum use of this versatile and featured packed Server. Please refer this Installation Guide carefully to get acquainted with installation and configuration procedure of PRAMAN CMS.

This Installation Guide includes step-by-step instructions for installing and configuring PRAMAN CMS.

PRAMAN CMS Installation Guide aims to provide the required information to the System Administrator, who will install and configure PRAMAN CMS.

If you have any concerns regarding the installation and configuration procedure of PRAMAN CMS, contact Matrix Customer Care.



# ***Installing and Configuring PRAMAN CMS***

---

This section provides step-by-step instructions and guidelines for installing and configuring PRAMAN CMS.

## **Pre-requisites**

- You have a PC with Windows Operating System 7 and higher.
- You have installed Microsoft SQL Server 2008 and higher.
- You have downloaded the required setup files from [https://wiki.matrixcomsec.com/index.php?title=Software\\_Releases\\_-\\_Telecom\\_Products](https://wiki.matrixcomsec.com/index.php?title=Software_Releases_-_Telecom_Products). Contact your respective Channel Partner and Matrix Technical Support Team for more information.
- You have installed Microsoft Visual C++ 2015 Redistributable and higher.

If this software is not pre-installed on your PC, the same can be installed during the installation process of PRAMAN.

- You have enabled the below mentioned IIS Settings<sup>1</sup> of your PC.

If the IIS Settings listed below are not enabled in your PC, the same can be enabled automatically during the installation process of PRAMAN.

.NET Framework 3.5 (includes .NET 2.0 and 3.0)

- Windows Communication Foundation HTTP Activation
- Windows Communication Foundation Non-HTTP Activation

.NET Framework 4.7 Advanced Services

- ASP.NET 4.7
- WCF Services
  - HTTP Activation
  - Message Queuing (MSMQ) Activation
  - Named Pipe Activation
  - TCP Activation
  - TCP Port Sharing

Internet Information Services

- Web Management Tools
- IIS Management Console

---

1. Go to **Control Panel > Programs > Programs and Features > Turn Windows features on or off**.

- IIS Management Scripts and Tools
- IIS Management Service
- World Wide Web Services
  - Application Development Features
    - .NET Extensibility 3.5
    - .NET Extensibility 4.7
    - ASP.NET 4.7
    - ISAPI Extensions
    - ISAPI Filters
  - Common HTTP Features
    - Default Document
    - Directory Browsing
    - HTTP Errors
    - HTTP Redirection
    - Static Content
  - Security
    - Base Authentication
    - Centralized SSL Certificate Support
    - Client Certificate Mapping Authentication
    - Digest Authentication
    - IIS Client Certificate Mapping Authentication
    - IP Security
    - Request Filtering
    - URL Authorization
    - Windows Authentication

Internet Information Services Hostable Web Core.

After you have enabled the above listed IIS Settings, you can now install and configure PRAMAN CMS on your PC.

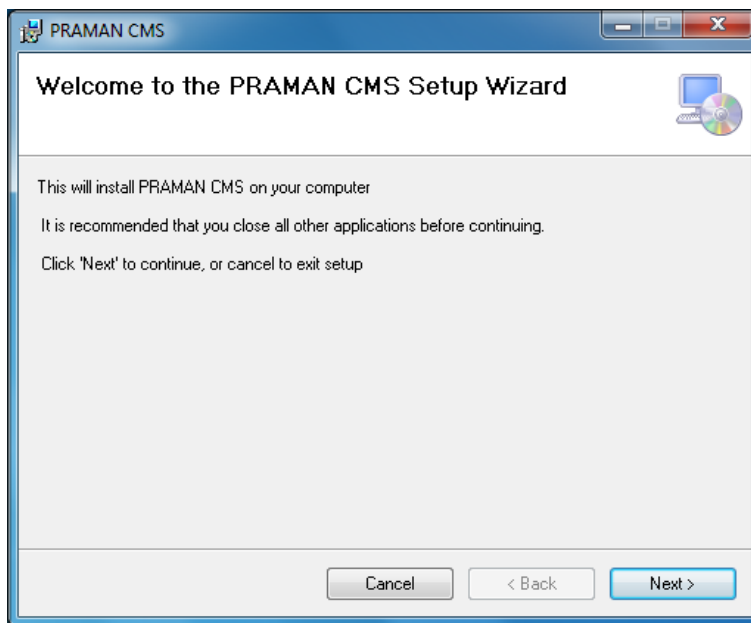


*Before installing, make sure you have the administrator rights of your PC.*

**For Installing PRAMAN CMS, follow the steps described below:**

- Double-click the PRAMAN CMS Setup file to start the installation process.

The Setup Wizard opens.



- Click **Next**.

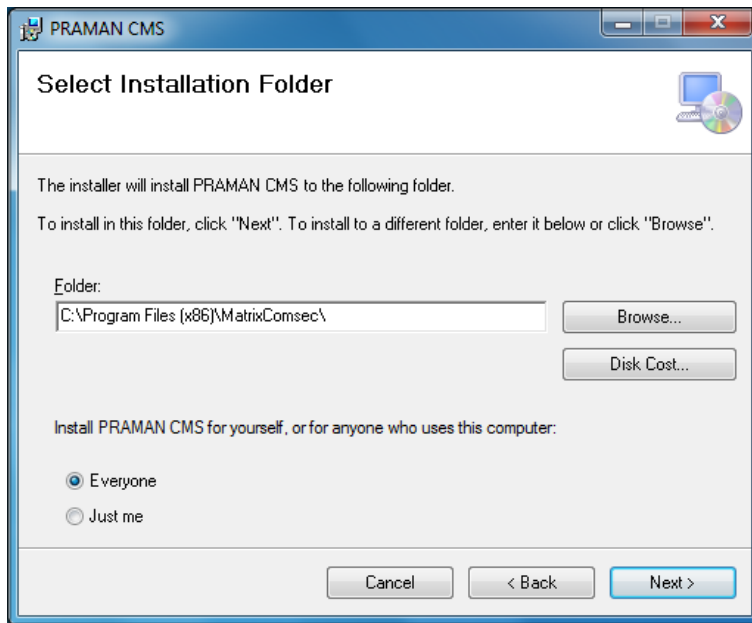
The License Agreement window opens.



- Select **I agree** and click **Next**.

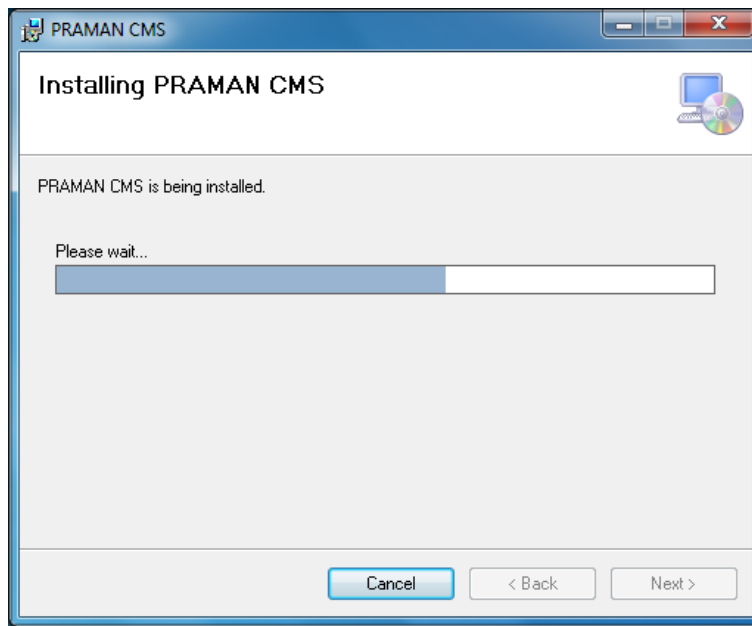


The Select Installation Folder window opens.

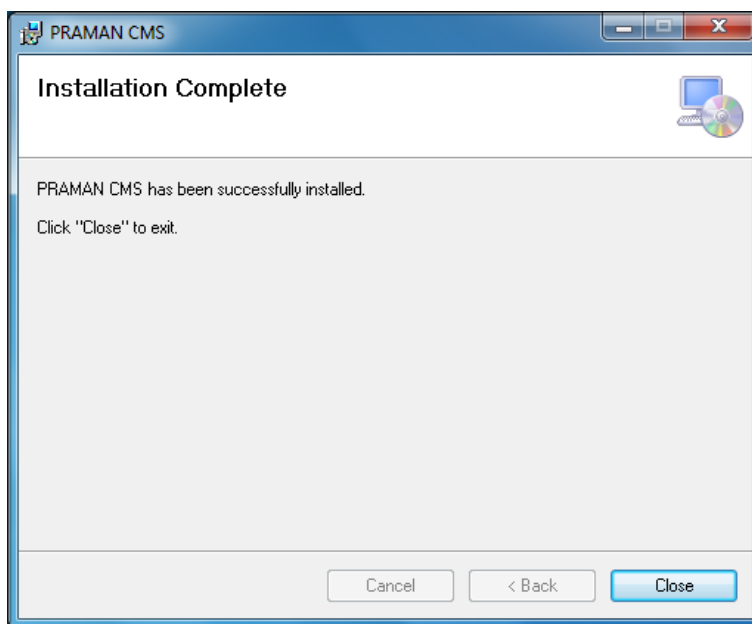


- A destination path is provided by default. You can store the PRAMAN CMS application files at this path or to select the desired destination, click **Browse**.
- Select the desired option in **Install PRAMAN CMS for yourself, or for anyone who uses this computer**.
  - Select **Everyone**, if you want to share the configuration rights of PRAMAN CMS with other login profiles on your PC.
  - Select **Just me**, if you do not want to share the configuration rights of PRAMAN CMS with other login profiles on your PC.By default, **Everyone** is selected.
- Click **Next**.

The Installation Process begins.



- Click **Next** to complete the Installation.



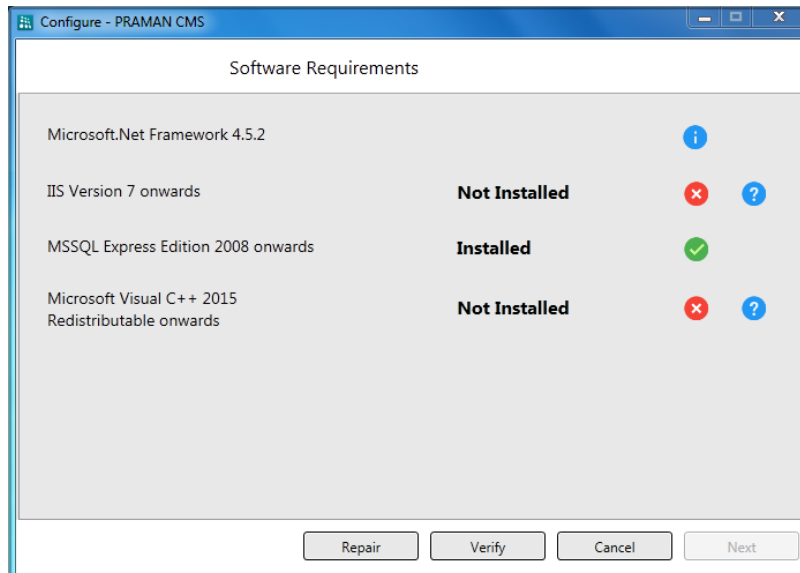
- Click **Close**.

The PRAMAN CMS icon appears on the desktop.

For configuring PRAMAN CMS, follow the steps described below:

- Double-click the PRAMAN CMS icon on your desktop.

The Software Requirements window opens.




The installation status of all the softwares required for configuring PRAMAN CMS on your PC are displayed.

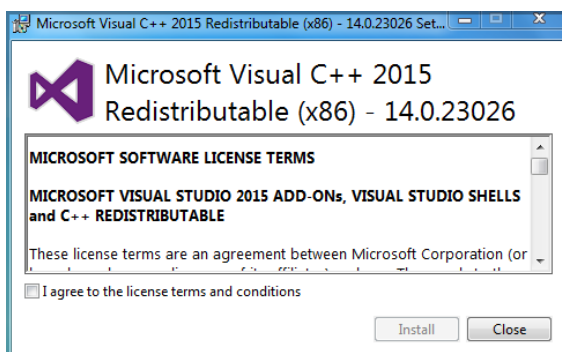
If the installation status of any of the pre-installed software is displayed as *Not Installed*, then click **Verify** to re-validate the installation status of this software.

In case, the Microsoft Visual C++ 2015 Redistributable is not installed or the required IIS Settings are not enabled on your PC, then click **Repair** to install Microsoft Visual C++ 2015 Redistributable and enable the required IIS Settings (enabled automatically).



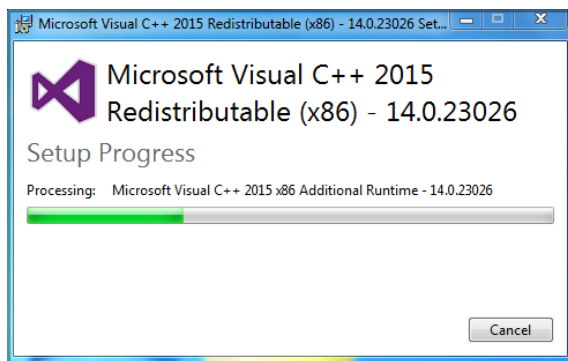
*In case, the Microsoft Visual C++ 2015 Redistributable is not installed or IIS Settings are not enabled by clicking **Repair**, then refer to the respective installation guide by clicking **Help** . The installation guides include step-by-step instructions for installing these softwares.*

After you click **Repair**, the following window opens.

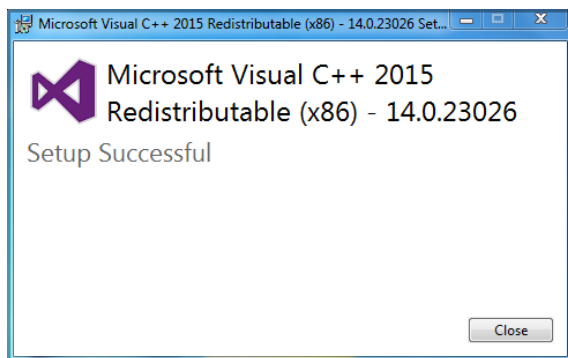


- Select **I agree to the license terms and conditions** and click **Install**.

The Installation Process begins.

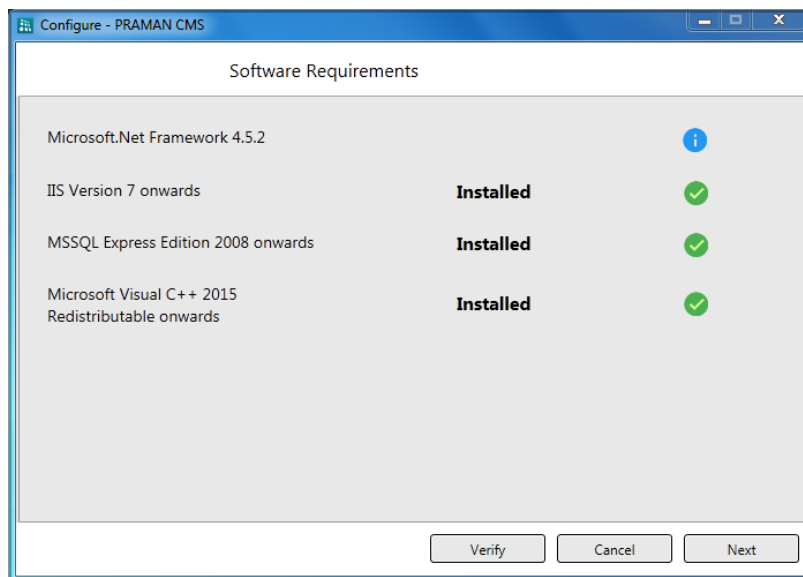


Microsoft Visual C++ 2015 Redistributable is successfully installed on your PC.



- Click **Close**.

The following window appears.



- Click **Next**.

The Microsoft SQL Server Database window opens.

The screenshot shows a window titled 'Configure - PRAMAN CMS' with a sub-header 'Microsoft SQL Server Database'. The main area contains the text 'Please specify existing database connection details to be used by PRAMAN CMS'. Below this are three input fields: 'Server Address', 'User Name', and 'Password'. An important note states: 'Important: User Name and Password will be saved and used by PRAMAN CMS to connect to Database'. At the bottom are 'Cancel', 'Back', and 'Next' buttons.

- In **Server Address**, enter the instance name of the Microsoft SQL Server.
- In **User Name**, enter the user name for accessing the Microsoft SQL Server.
- In **Password**, enter the password.
- Click **Next**.

The Application Configuration window opens.

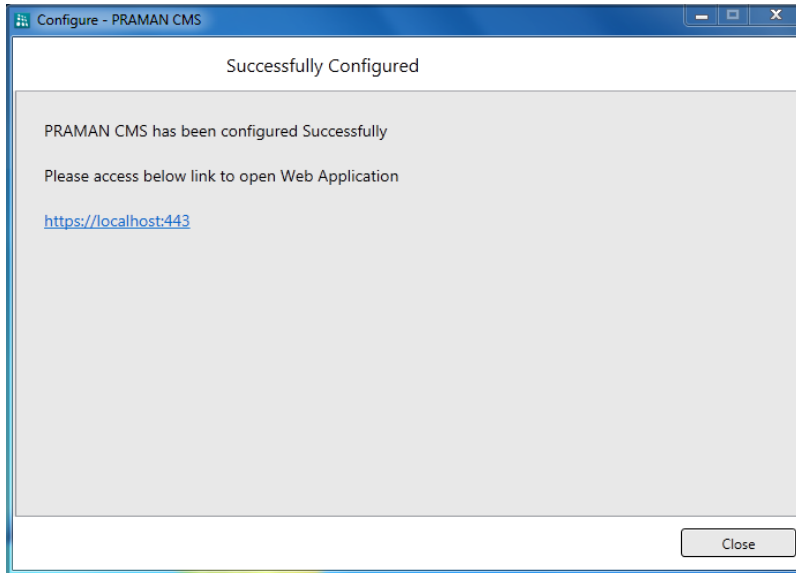
The screenshot shows a window titled 'Configure - PRAMAN CMS' with a sub-header 'Application Configuration'. The main area contains several input fields: 'HTTP Port' (default 80), 'HTTPS Port' (default 443), 'Rest API Configurations' (default 9044), and 'Event Capturing Port' (default 9023). There is also a 'System Logs Path' field with an information icon and a 'Browse' button. At the bottom are 'Cancel', 'Back', and 'Next' buttons.

- The following ports are provided with the default values.
  - HTTP Port: 80
  - HTTPS Port: 443
  - Rest API Configurations: 9044
  - Event Capturing Port: 9023

You can change these values as per your requirement. Valid Range: 1025 - 65535.

After specifying the Port values, click **Browse** to select the desired path for storing the System Logs on your PC.

- Click **Next** to complete the configuration.

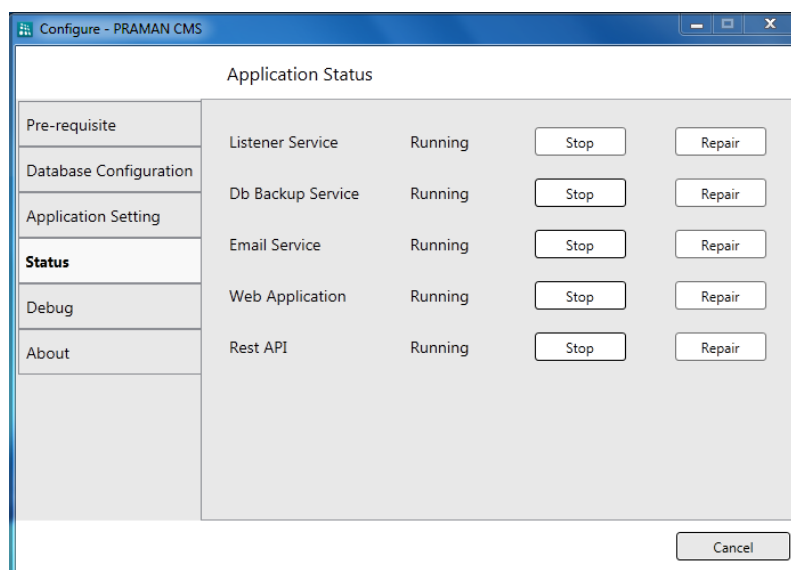


- If you wish to access the login page of PRAMAN CMS, click the link. The login page opens in a new window.
- In the Successfully Configured window, click **Close**.

After installing and configuring PRAMAN CMS on your PC, you can now view the status of different applications. You can also monitor these applications, if required. To do so,

- Double click the PRAMAN CMS icon on your desktop.

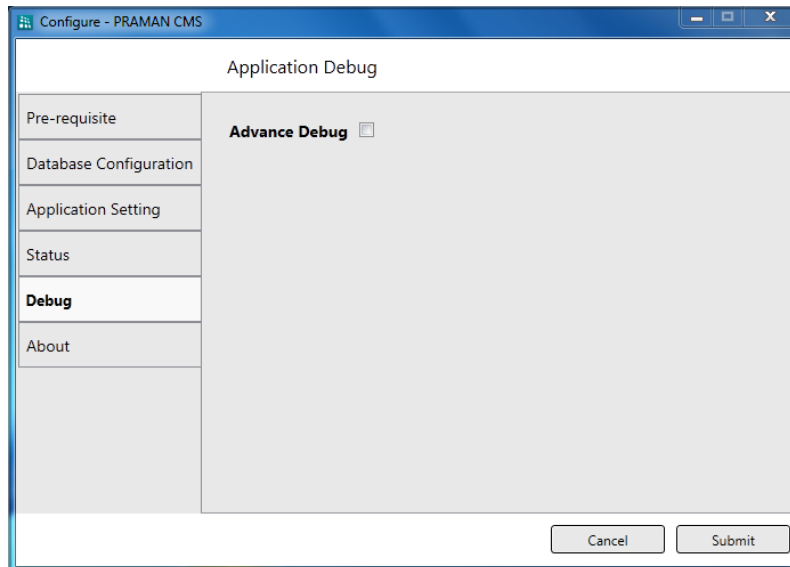
The Application Status window opens.



You can also enable the advance debug option for PRAMAN CMS, whenever required. However, it is recommended to consult the Matrix Technical Support Team before enabling Advance debugs.

- Click Debug on the left pane.

The Application Debug Window opens.



- Enable **Advance Debug**.
- Click **Submit**.

Moreover, you can also change the Database Configuration and Application Settings, whenever required, by clicking the respective link on the left pane.



## **MATRIX COMSEC**

### **Head Office**

394-GIDC, Makarpura, Vadodara - 390010, India.

Toll Free No: 18002587747

E-mail: [Customer.Care@MatrixComSec.com](mailto:Customer.Care@MatrixComSec.com)

[www.MatrixTeleSol.com](http://www.MatrixTeleSol.com)