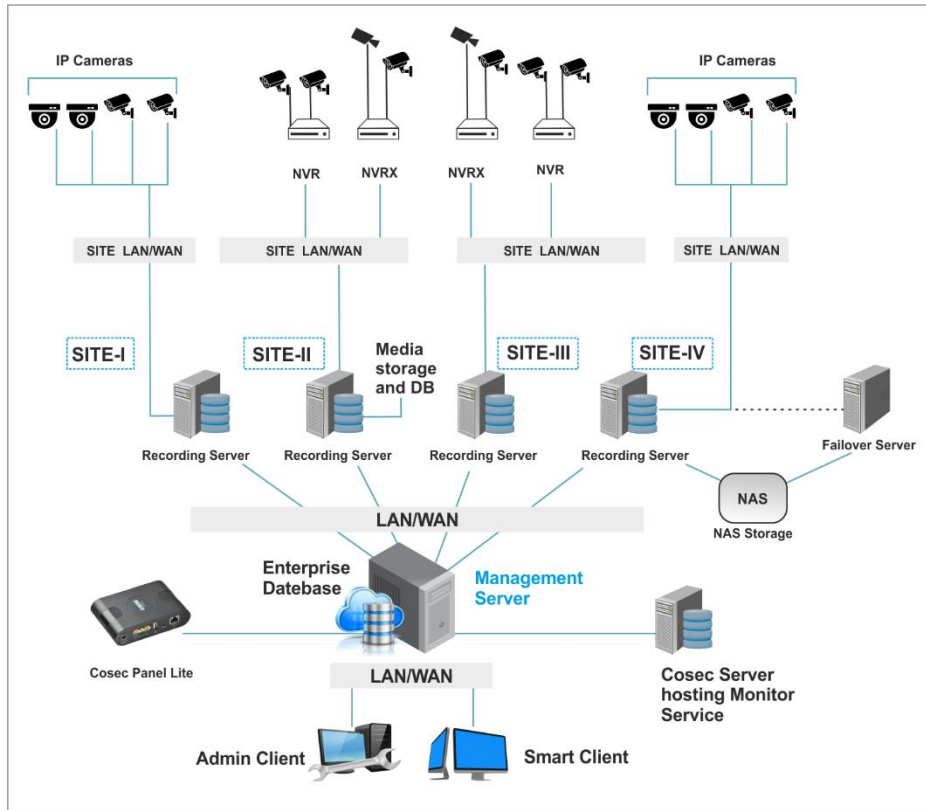
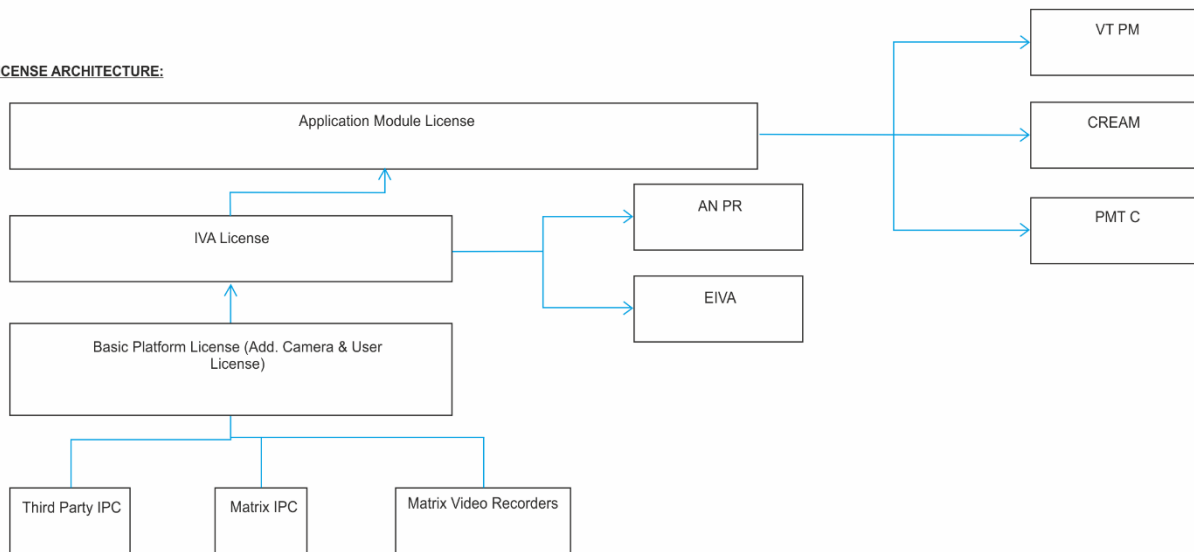


PRODUCT ARCHITECTURE AND COMPONENTS



LICENSE ARCHITECTURE

LICENSE ARCHITECTURE:



Platform License	IVA License (Cam1, Cam3, Cam10)	Application Module License	Extra License	Software Upgradation License
SAMAS Platform (FOC: Weighbridge Application, COSEC Integration, Multi-display, Investigator with VCA, CREAM Basic Scenario)	Enterprise IVA (EIVA) (Motion Detection, Tripwire, No Motion Detection, Camera Tampering, etc.)	Vehicle Tracking & Parking Management (VTPM) (Slot- 10/50/200)	Camera License (Channel 5/20/100)	Annual Up gradation Package (based on Total No. of Camera)
	Automatic Number Plate Recognition IVA (ANPR)	Cognitive Monitoring, Analysis & Response Engine (CREAM))	User License for Smart Client/ Mobile Application	

- No Extra license is needed to set up the Recording Server, Redundant Recording Server, or Failover Recording Server.
- No Extra license for setting up the Transcoding Server or Transcoding the stream parameters.
- No Extra license for setting up the ONVIF RTSP Server or Sharing the required streams with Third-party requesting clients.

PRODUCT PREREQUISITES

1. Microsoft .NET Framework 4.5 & Above
2. Windows Installer 3.1
3. Microsoft Visual C++ 2015 - 2019 Redistributable - vc_redist_x64.exe
4. Microsoft SQL Server 2008 R2 SP2 (For DBMS) up-to 2016 Version - Express Edition for Less than 10 GB (Freeware), Windows 11 SQL Express 2019
5. MS SQL Server Standard Edition/ Enterprise Edition - License Version (2017 Bic. Guide)
 - a) CAL License - Require No. Of CAL License equal to No. Of Components connected with DB
 - b) CORE License - Equal to the Cores of the Server in Which DB is installed.
6. Crystal Report Runtime x64 13.0.20.2399 or Above (For Reports)
7. Microsoft Access Database Engine 2010 Redistributable (64-bit) or higher (For Importing Multi-Language File)

PRODUCT OFFERINGS

Functionality	SATATYA SAMAS Platform
Default No. of the Camera License (FOC with SATATYA SAMAS PLT)	5
Maximum No. of the Cameras for Solution (Supported)	65535
Maximum No. of the Cameras Per Recording Server (Supported)	255
Default No. of Concurrent Users (FOC with SATATYA SAMAS PLT)	1
Maximum No. of the Concurrent Users (Supported)	65535
No. of MATRIX Video Recorders per server (Supported)	IPC Channel Based
Maximum No. of Recording Server (Supported)	65535
IVA Functions (FOC with SATATYA SAMAS PLT)	EIVA1 (Enterprise IVA 1 Channel)
	VTPM5 (Parking Management 5 Slot(s))
	CREAM1 (1 Advance Scenario)
	1 ANPR (LPR for 1 Ch)
COSEC Access Control Integration (FOC with SATATYA SAMAS PLT)	Yes
Multi-display (FOC with SATATYA SAMAS PLT)	Yes
Module Wise Functionality Covered	
SAMAS Platform	SAMAS License
	Centralized/ Distributed Management &

Deployment Architecture	<p>Recording Components</p> <ul style="list-style-type: none"> • Management Server • Recording Server • Fail-over Server • IVA Server • Notification Server • License Server • Transcoding Server • ONVIF Server
Centralized Management & Control	Yes
Operating System Platform	Microsoft Windows
DBMS Support	MS-SQL
Video Wall/ Multi-Display	Yes
ONVIF Support	Yes, Profile S and G
Mobile App without Cost	Yes (SATATYA VISION (Android & i-OS))
Multiuser Login	Allowed
Login Via SSL - Secured Socket Layer Login	Yes
Retrieval of Password through OTP (SMS/ E-mail)	Yes
E-mail & SMS Templates for Events & Action	Yes (Default and Custom)
Creating Custom/User-defined Events/ Alerts	Yes
Calling Custom Events through TCP and HTTP API	Yes (Trigger)
Integrating COSEC & Custom Database	Yes (For User & Vehicle Details)
Activity/ Events Logs	Yes, with Custom Search Criteria
License Management Configuration	Yes
Device-based License Dongle Support	Yes (Dongle 200, Device Supported: COSEC VEGA d PANEL LITE V2)
Vehicle & User Attributes	Yes (Add/ Edit/ Delete)
Failover Recording Server Without Additional Cost	Yes
Redundant Recording Server without additional License	Yes
ONVIF RTSP Server without additional License	Yes
Transcoding Server without additional License	Yes
Server & Entity Connection with Dual ISP (Failover ISP Support)	<p>Yes - Provision to Provide Different Three IPs</p> <ul style="list-style-type: none"> • Local Network IP • Primary ISP • Secondary ISP <p>Applicable to Management Server, Recording Server, Failover Server, IVA Server & Devices.</p>
Fail-Over Server Support & Recording	<p>Yes</p> <ul style="list-style-type: none"> • Local Drive Support • Device/ Entity wise redundancy • Playback Support

Recording Server Configuration	<p>Yes</p> <ul style="list-style-type: none"> • Activate Server • Set up Storage, Recording & Backup Assigning & Configuring the Devices (Recorders & IPC) to Server (AutoDiscovery & Manually) <p>Location & Contact Information</p>
Configuring Camera & Device	<p>Yes</p> <ul style="list-style-type: none"> • Profile Setting • Stream Parameters & Stream Usage • Recording & Backup • Events <p>Basic Settings (OSD; Image Appearance)</p>
Video Compression Format	H.265/ H.264/ MPEG-4/ MJPEG
Storage	<p>Yes</p> <ul style="list-style-type: none"> • Local Drives • Network Added Storage (NAS) • FTP Drive
Recording Type	<p>Yes</p> <ul style="list-style-type: none"> • Continuous Recording • Manual Recording • Motion Recording • Event Recording
Adaptive Recording	Yes
Device/ Edge Initiated Communication	Yes
Backup & Archiving	Primary Backup with Two Level Archiving Provision
Storage & Bandwidth Optimization	Yes
Day Highlight & Clip Capture	Yes
Configuration Cloning	Yes
System & Device Time Synchronization	Yes (Over ONVIF)
Camera Grouping	Yes
PTZ Positions & Tour Configuration	Yes
On-Screen PTZ Controller	Yes
Hardware PTZ Controller Support	Yes (USB)
Multiple IPC Export over Synchronous and Asynchronous Mode	Yes
Video Export Format	Native (Proprietary Format)/ AVI
Watermarking on Export	Yes (Image/ Video)
Detection through Investigator	Yes (Based on the IVA License)
E-Map/ Sitemap	<p>Yes</p> <ul style="list-style-type: none"> • Add Electronic Map (.jpg / .bmp Format) • Multilevel • Place the Entity with a different Appearance. • Configure Event Notification

E-map through Live View Video Tile	Yes
System Monitoring & Health Chart	Yes (Server/ Devices/ IPC) <ul style="list-style-type: none"> • Connected/ Not Connected Entity • Stream Receiving • CPU Usage/ Memory Usage/ Server Availability • Storage Usage and Projection • Recording Rate • Last and Latest Recording Files Availability
User Logical View Tree - For Online Users	Yes
Provision to mark Device Under Maintenance	Yes, with Mandatory Reason
COSEC Access Control Integration	Yes - No restriction
Standalone Panel Support	Yes
I/O Integration with Sensors	Yes
System Setting	Yes <ul style="list-style-type: none"> • Event/ Alarm/ Notification Log management • IP Filter (Max. 99 IP Range) • Active Directory Support
Multi-language Support	Yes <ul style="list-style-type: none"> • User Interface Level - Labels • Reports & Templates • Input
System Account User	Accessibility-wise User Rights (Add/ Edit/ Remove) <ul style="list-style-type: none"> • Administrator • Operator • User
File Templates	<ul style="list-style-type: none"> • File Import/ Export • Schedules • Priority wise Alarms & Custom Alarms
API Integration for Third-party POS	Yes
Four Simultaneous Stream support	Yes - Live/ Local/ Recording/ Mobile
Multicast Stream Support	Yes (Recording Server, Smart Client, IVA Server Third Party Client)
64 Camera Video Template with different Matrix	Yes
Personalize My View for Live View & Page Sequence	Yes
Dwell Time Configuration for IP camera	Yes - 1 to 60 S Individual IP camera level configuration
Client Bandwidth Optimization	Yes <ul style="list-style-type: none"> • Using Bandwidth available - Yes (Transcoding) • As per the Video tile occupied on Screen - Yes (Layout wise)
Event Log/ Activity Log & Export	Yes
Two Way Audio	Yes
Audio Broadcasting	Yes

Third-party Client – Stream Share	Yes Live View and Playback Data using RTSP Streaming Server
One Click IPC & Monitor Control on Client	Yes
Alarm Management	Yes – Generation/ Acknowledgement / Comment/ Close
Operator Generated Event/ Manual Event/ Trigger IVA	Yes
Bookmark facility with Lock	Yes
Edge Recording	Yes
Edge Storage Retrieval & Playback sync	Yes (Connection/ Schedule retrieval of Records)
Video Pop up/ Email/ SMS/ Snapshot as Live Notification	Yes
Reports with Multi-language Support	Yes
UI Personalization	Yes - Custom Logo on Client Screens & Video Export
Report Personalization	Yes - Custom Logo & Font Size
Advance Report with Report Scheduler	Yes
Report with Video Clip Hyperlink - Thumbnail & Images	Yes
PRODUCT ADD ON	
COGNITIVE RESPONSE ENGINE WITH AUTOMATED MON (CREAM)	Advance Scenario-based Event & Action Configuration License
Basic Scenario Without Cost	Single Event & Multiple Action Configuration
Advance Scenario	Multiple Actions against Multiple and Combinational Events Configuration Sources from All the Connected Modules & Entity <ul style="list-style-type: none"> • Wait (Delay) as an Action • Configure Action against Failed Scenario • Logical Grouping of Event & Action • Scenario Initiated • Scenario Waiting • Scenario Resumed • Scenario Failed
Schedule Execution	Yes
Detect on Event	Yes
Event Source	<ul style="list-style-type: none"> • Management Server • Manual Trigger • Recording Server • Device • Sensor • Alarm • IVA Server • Fail-Over Server • Perimeter Management Entity • Crowd Premise

	<ul style="list-style-type: none"> • Custom Event • Emergency Event • Camera • Access Control Device • Parking Management Entity • Scenario
Action Choices	<ul style="list-style-type: none"> • Capture Image • Import File • Generate File • Open Door (COSEC Device) • Live View on Event • Send SMS • Record Event • Set PTZ Position • Send E-mail • Trigger COSEC - AUX Output • Trigger Alarm • Trigger IVA Detection • Trigger Device – AUX Output • Wait (Introduce Delay)
Reports	<p>Yes</p> <ul style="list-style-type: none"> • Evidence Reports with – Events, Parameters, Image Detailing
PERIMETER MANAGEMENT	EIVA – Channel-based license
PERIMETER MANAGEMENT - IVA Module (EIVA)	<p>Yes</p> <ul style="list-style-type: none"> • Intrusion Zone – Directional Intrusion Detection Event • Security Line – Tripwire and Tailgating Event • Perimeter Zone – Motion/ No Motion/ Camera Tampering/ Missing Object/ Loitering Events
VEHICLE TRACKING & PARKING MANAGEMENT	VTPM - Parking Slot based License
Parking Management	<p>Multilevel Hierarchical Parking Solution</p> <ul style="list-style-type: none"> • Parking Slot/ Slot group/ Lane/ Area/ Facility – I.e. (Facility (Area (Lane (Slot Group (Slot))))))
Vehicle Occupancy	<ul style="list-style-type: none"> • Object Size based Occupancy • LPR-based Occupancy • Parking Occupancy Sensor*
	Yes

Vehicle Security Controls	<ul style="list-style-type: none"> • Integration with Access Control Device and Database • Vehicle Whitelist/ Blacklist/ Authorized/ Not Authorized/ Allowed/ Not Allowed Functionality • Auto Authorization of Vehicle User Restriction 		
Parking Management Events	<p>Yes</p> <ul style="list-style-type: none"> • Unauthorized Parking • Prohibited Parking • Improper Parking • Slot Occupancy • Vehicle Overstay • Parking After Closing Service Driveways - Wrong Way Detection 		
Parking Premises & Grouping	<p>Yes</p> <ul style="list-style-type: none"> • Vehicle Counts (In/Out) Premise Availability 		
Slot Attributes & Entities	Yes (Add/ Edit/ Delete)		
Parking Management - Directional Signboards/ Counter &	Yes - Media Client & Multi-display Dashboard		
Reports	<p>Yes</p> <table border="0"> <tr> <td> <ul style="list-style-type: none"> • Prohibited Parking • Vehicle Counting • Wrong Way Parking • Slot Occupancy • Unauthorized Parking • Most Occupied Parking </td> <td> <ul style="list-style-type: none"> • Improper Parking • Most Visited Parking Ent • Vehicle Overstay • Least Occupied Parking • Parking After Closing Ho • Least Visited Parking Ent </td> </tr> </table>	<ul style="list-style-type: none"> • Prohibited Parking • Vehicle Counting • Wrong Way Parking • Slot Occupancy • Unauthorized Parking • Most Occupied Parking 	<ul style="list-style-type: none"> • Improper Parking • Most Visited Parking Ent • Vehicle Overstay • Least Occupied Parking • Parking After Closing Ho • Least Visited Parking Ent
<ul style="list-style-type: none"> • Prohibited Parking • Vehicle Counting • Wrong Way Parking • Slot Occupancy • Unauthorized Parking • Most Occupied Parking 	<ul style="list-style-type: none"> • Improper Parking • Most Visited Parking Ent • Vehicle Overstay • Least Occupied Parking • Parking After Closing Ho • Least Visited Parking Ent 		
CROWD MANAGEMENT	PMTC – Channel-based License		
Crowd Movement (Crowd Premise & Grouping)	<p>Yes</p> <ul style="list-style-type: none"> • People Counting (In/ Out) Premise Availability 		
Edge People Counting	Supported through MATRIX IPC – Motorized Varifocal Variant(s)		
Live Event Counter	Yes		
Reports	<p>People Counting Reports with Computational Parameters</p> <ul style="list-style-type: none"> • Tabular/ Graphical (Line/Bar/Column) <p>Reports with PDF and Excel File Format</p>		
VEHICLE MANAGEMENT - ANPR	ANPR – Channel-based License		
License Plate Detection & Recognition/ Automatic Number Plate Recognition	Yes		
Vehicle Blacklist & Whitelist	Yes through COSEC/ Custom Database		

Supported Country List	<ul style="list-style-type: none"> • Algeria • Argentina • Australia • Belgium • Bolivia • Botswana • Brazil • Bulgaria • Cambodia • Canada • Cape Verde • Chile, Columbia • Costa Rica • Croatia • Cuba • Cyprus • Czech Republic • Denmark • Ecuador 	<ul style="list-style-type: none"> • El Salvador • Estonia • Germany • France • Greece • Guatemala • Honduras • Hungary • India • Iceland • Italy • Israel • Italy-Moped • Italy-Vintage • Kenya • Latvia • Malaysia • Namibia • Norway • Netherlands 	<ul style="list-style-type: none"> • Peru • Portugal • Poland • Romania • Singapore • Slovakia • Slovenia • South Africa • South Africa Personalized • Spain • Sweden Personalized • Switzerland • Turkey • Turkey-Inverse • UK Great - Britain • Ukraine • Uruguay • Venezuela • Vietnam
Reports	<p>Yes</p> <ul style="list-style-type: none"> • Vehicle Detection • Vehicle Identified • Vehicle Unidentified • Blacklisted Vehicle Identified • Whitelisted Vehicle Identified • Suspected Vehicle Identified 		